



S1D-A

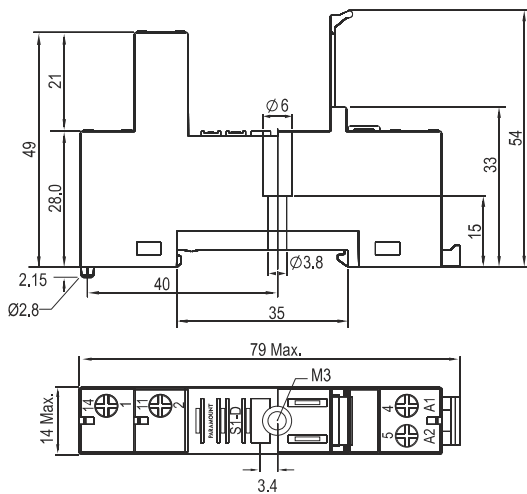
Only
14 mm
WIDE

**Input / Output Socket [10A] for
P1 NO Relays DIN Rail or Panel Mountable**

Wiring Diagram



Dimensions in mm.



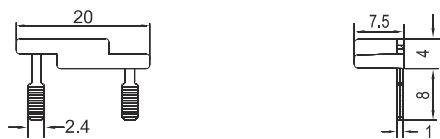
Accessories



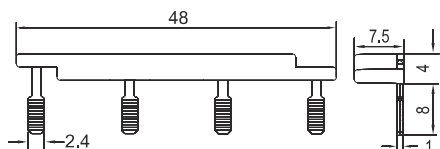
Accessories

Bridge Bar S1D-B1 & S1D-B4 for Coil Terminal (A2 / 5)

Dimensions in mm.



S1D-B1, 10A @ 250 VAC, 1 Way Bridge for Coil



S1D-B4, 10A @ 250 VAC, 4 Way Bridge for Coil

Suitable Relays : P1-A, P1-T-A, P1-A-M

Specifications

Poles 1 Normally Open Contact
Nominal load : 10A / 250V

Insulation: Di-electric strength, 1minute

Between contact and coil 5 KV
Between all terminals and DIN Rail 5 KV
Between adjacent terminals 3 KV

Brass Tin Plated Screw

Max. screw torque 1.2 Nm
Screw dimensions M3, Pozi

Wire in-lets capacity:

Solid Wire 4 mm² or 2 x 2.25 mm²
Multi core 22 14 AWG
Ferrule tip terminals 4 mm²

Other Aspects

Weight Approx. 28 gms

DIN Rail / Panel Mountable

Integrated Relay Hold Down Clip

Removable White Marking Label

EN / DIN Sequential Numbering according to

EN 60947 & IEC 61810

Approvals

